

FREEHOLD



House - Semi-Detached (EPC Rating: D)

332 HEATHWAY, DAGENHAM, RM10 8NJ

Offers In The Region Of

£475,000

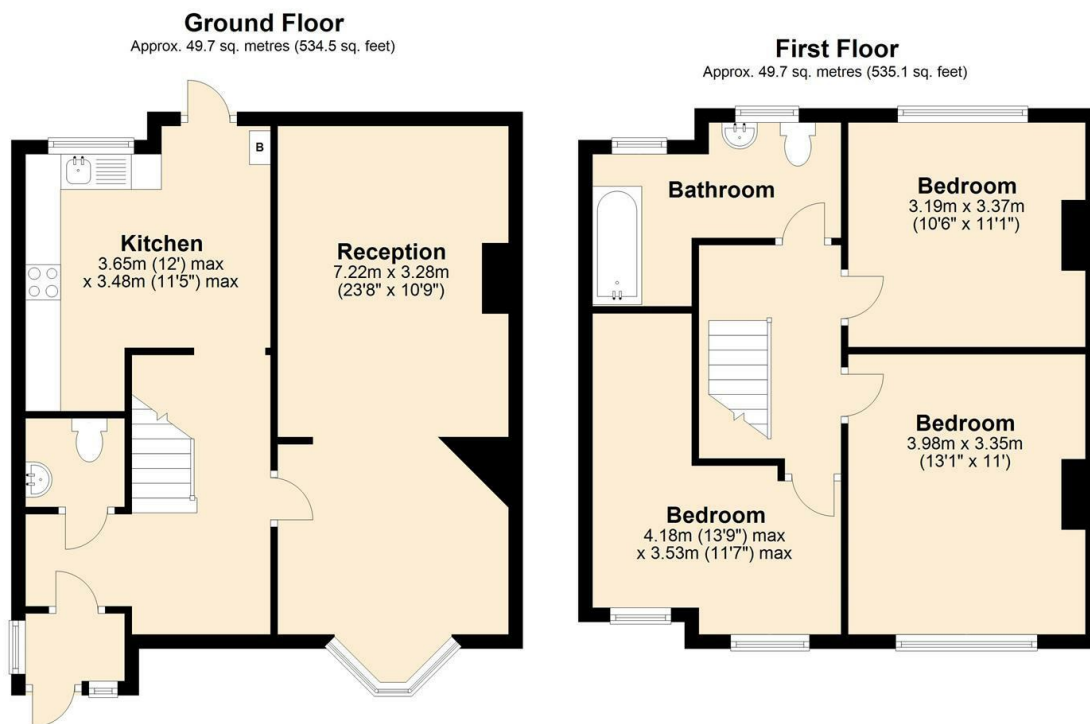
STEPS

Estate Agents



3 Bedroom House - Semi-Detached located in Dagenham

EXTENDED SEMI WITH THREE DOUBLE BEDROOMS. Situated a stones throw from The Heathway this IMMACULATE family house with DOUBLE HEIGHT extension to the side, and KITCHEN EXTENSION. There is off road parking for two cars and a lovely sunny back garden. MUST BE VIEWED.

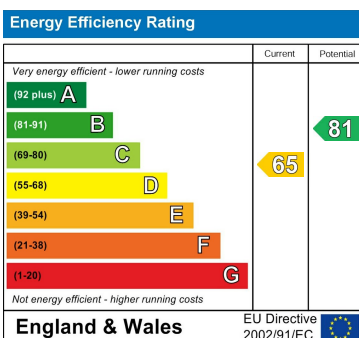


Total area: approx. 99.4 sq. metres (1069.7 sq. feet)

Council Tax Band

C

Energy Performance Graph



Call us on

020 8593 5933

dagenham@steps.me.uk

www.steps.me.uk

Agents Note: Whilst every care has been taken to prepare these particulars, they are for guidance purposes only. All measurements are approximate and are for general guidance purposes only and whilst every care has been taken to ensure their accuracy, they should not be relied upon and potential buyers are advised to recheck the measurements.